



E-Health Barakat Company
E-Health Operator

E-Health Barakat Company



Table of content

<u>Company Overview</u>	3
<u>Diagnostic kits</u>	6
<u>Medical Equipment & Mobile Gadget</u>	34
<u>E-Health Platform & Tele-Health Services</u>	40





Our Mission

To reach health equity in providing health services for all people we reduce costs, enhance quality and make the services available by applying health technology.



Our Vision

Our vision is to develop a health-oriented community/society through innovative technology-based health care to move from treatment to prevention and from prevention to wellness.



ABOUT E-Health Barakat

E-Health Barakat Company (BEHCO) is a private company that engages the state-of-the-art technologies in the field of public health to improve quality and access to health care services to a broad spectrum of individuals and professionals. We have the license of mobile-health operator. beside the mobile health services, we deliver e-health and tele-health services too. Developing these basic electronic services principles across 8 countries will shift the approach of health field from treatment to prevention possible. Lately and from the beginning of the SARS-CoV-2 outbreak, our company

started studying and producing several related medical products such as various kits to help overcoming this disease. We have the largest kits production line in the Iran.

Various diagnostic kits were made by our company which was widely distributed in Iran by the ministry of Health, and with the production of rapid antigen kits, the chain of infection was definitively reduced and the disease burden was reduced too.

A PIECE OF OUR Company's History

2013

- Obtaining the license of electronic health operator
- Start to deliver e-health service.

2014-2015

- Establishment of electronic health tourism network
- Development of telehealth and in east and southeast of Africa and the Middle East

2016-2018

- Development of mobile health service in different country

2021

- Ability to development produce diagnostic kits in different disease diagnosis failed 105 different
- Start to produce smart health gadget equipment
- Establish health product line

2019-2020

- Establishment of medical equipment product line
- Launching the largest production line of COVID-19 diagnostic kits in the Middle East.



Management System Certification Body No. MSCB-105

CERTIFICATE

No. 21-A-3491 Rev. 0

E-Health Barakat Company

2nd Floor, Beheshti Medical University Building, Ofogh Blvd., Babayian St.,
Hakimieh Exit, Shahid Babaei Highway, Tehran, Iran

Company Reg. No.: 448754

has documented and implemented system in compliance with the requirements of

**ISO 9001:2015
Quality Management System**

for

Production of COVID-19 IgG/IgM Antibody Rapid Test, COVID-19 Real-Time PCR Kit, Viral RNA Extraction Kit, SARS-CoV-2 Influenza (A/B) Multiplex Assay, SARS-CoV-2 Influenza Multiplex Assay, SARS-CoV-2 Total ELISA, SARS-CoV-2 IgG ELISA, SARS-CoV-2 IgM ELISA, SARS-CoV-2 Antigen Rapid Test

The certificate is issued on the basis of the results mentioned in the pertinent audit report. Validity of the certificate is conditionally limited by positive results of surveillance audits, which the certified company is committed to undergo.

This certificate can be invalid if the certificate holder does not fulfill the conditions set out in the certification agreement.

IGC is accredited by IAS for the scope and sub scopes described in this certificate

Initial issue date: Jul. 20, 2021
Expire date: Jul. 19, 2024



Rm. 501, Daeryung techno town, 638, Seobusae-gil, Geumcheon-gu, Seoul, Republic of Korea
www.igcert.org



www.igcert.org
Institute of Global Certification
www.igcert.org

Head of Certification Body
G. Gilbert
G. Gilbert

Initial issue date: Jul. 20, 2021
Expire date: Jul. 19, 2024



www.igcert.org
Institute of Global Certification
www.igcert.org

Head of Certification Body
G. Gilbert
G. Gilbert

Initial issue date: Jul. 20, 2021
Expire date: Jul. 19, 2024



www.igcert.org
Institute of Global Certification
www.igcert.org

Head of Certification Body
G. Gilbert
G. Gilbert

Initial issue date: Jul. 20, 2021
Expire date: Jul. 19, 2024



Management System Certification Body

CERTIFICATE

No. 21-GMP-0032 Rev.0

This is to certify that the GMP of

E-Health Barakat Company

2nd Floor, Beheshti Medical University Building, Ofogh Blvd., Babayian St.,
Hakimieh Exit, Shahid Babaei Highway, Tehran, Iran

Company Reg. No.: 448754

has implemented and documented GMP in compliance with the requirements of
the standard

Good Manufacturing Practices Requirements

for

Production of COVID-19 IgG/IgM Antibody Rapid Test, COVID-19 Real-Time PCR Kit, Viral RNA Extraction Kit, SARS-CoV-2 Influenza (A/B) Multiplex Assay, SARS-CoV-2 Influenza Multiplex Assay, SARS-CoV-2 Total ELISA, SARS-CoV-2 IgG ELISA, SARS-CoV-2 IgM ELISA, SARS-CoV-2 Antigen Rapid Test

The certificate is issued on the basis of the results mentioned in the pertinent audit report. Validity of the certificate is conditionally limited by positive results of surveillance audits, which the certified company committed to undergo.

This certificate can be invalid if the certificate holder does not fulfill the conditions set out in the certification agreement.

Initial issue date: Jul. 20, 2021
Expire date: Jul. 19, 2024



Rm. 501, Daeryung techno town, 638, Seobusae-gil, Geumcheon-gu, Seoul, Republic of Korea
www.igcert.org

Head of Certification Body
G. Gilbert
G. Gilbert

Initial issue date: Jul. 20, 2021
Expire date: Jul. 19, 2024



Rm. 501, Daeryung techno town, 638, Seobusae-gil, Geumcheon-gu, Seoul, Republic of Korea
www.igcert.org

Head of Certification Body
G. Gilbert
G. Gilbert

Initial issue date: Jul. 20, 2021
Expire date: Jul. 19, 2024



Management System Certification Body No. MSCB-105

CERTIFICATE

No. 21-B-1106 Rev. 0

E-Health Barakat Company

2nd Floor, Beheshti Medical University Building, Ofogh Blvd., Babayian St., Hakimieh
Exit, Shahid Babaei Highway, Tehran, Iran

Company Reg. No.: 448754

has documented and implemented system in compliance with the requirements of

**ISO 13485:2016
Medical Devices Quality Management System**

for

Production of COVID-19 IgG/IgM Antibody Rapid Test, COVID-19 Real-Time PCR Kit, Viral RNA Extraction Kit, SARS-CoV-2 Influenza (A/B) Multiplex Assay, SARS-CoV-2 Influenza Multiplex Assay, SARS-CoV-2 Total ELISA, SARS-CoV-2 IgG ELISA, SARS-CoV-2 IgM ELISA, SARS-CoV-2 Antigen Rapid Test

Technical Area: TA 16, TA 18

The certificate is issued on the basis of the results mentioned in the pertinent audit report. Validity of the certificate is conditionally limited by positive results of surveillance audits, which the certified company is committed to undergo.

This certificate can be invalid if the certificate holder does not fulfill the conditions set out in the certification agreement.

IGC is accredited by IAS for the scope and sub scopes described in this certificate

Initial issue date: Jul. 20, 2021
Expire date: Jul. 19, 2024



Rm. 501, Daeryung techno town, 638, Seobusae-gil, Geumcheon-gu, Seoul, Republic of Korea
www.igcert.org

Head of Certification Body
G. Gilbert
G. Gilbert



www.igcert.org
Institute of Global Certification
www.igcert.org

Head of Certification Body
G. Gilbert
G. Gilbert

Initial issue date: Jul. 20, 2021
Expire date: Jul. 19, 2024



www.igcert.org
Institute of Global Certification
www.igcert.org

Head of Certification Body
G. Gilbert
G. Gilbert

Initial issue date: Jul. 20, 2021
Expire date: Jul. 19, 2024



www.igcert.org
Institute of Global Certification
www.igcert.org

Head of Certification Body
G. Gilbert
G. Gilbert

Initial issue date: Jul. 20, 2021
Expire date: Jul. 19, 2024



Diagnostic kits

We are a leading company as a developer and manufacture of immunodiagnostic kits for infectious, tumor markers, genetic, fertility, veterinary diseases. Products are developed with stability and User friendly. In this section, diagnostic kits are used to identify diseases in order to determine the type of disease and related treatment in patients.



COVID-19 Diagnostic Kits

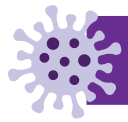
General Information:

When the covid-19 pandemic began, our team worked seriously to ensure the availability of existing test solutions and to develop new SARS-CoV-2 tests to meet international testing needs.

Today, we have developed a comprehensive type of SARS-CoV-2 testing solutions on the market, covering the needs of clinical and research customers, from manual to automated sample processing, low to high throughput, single-plex to multi-plex, and from active infection testing to the detection of previous viral exposure.

Technical Advantages:

- Simplicity and fast analysis
- Minimize false positive response
- High sensitivity and specificity
- Simplifies laboratory workflow



SARS-CoV-2 Antigen Kit (for Self-Test)

Rapid detection of COVID-19 virus

(Rapid Test!)

The SARS-CoV-2 antigen rapid Self-test kit is for rapid and qualitative detection of coronavirus in 20 minutes. This kit is for personal use and people can collect samples from their nasopharynx.

KIT SPECIFICATIONS:

- Sampling type: Nasopharynx
- Easy and fast to use without the need for special expertise and tools
- Easy and fast working method
- Shelf life: 24 months

● Specificity:

99%

● Sensitivity:

85%

ADVANTAGES OF THE KIT:

- **Reading time 20 minutes**
- With very high specificity and sensitivity
- High accuracy
- Reasonable price
- Available from pharmacies and health centers
- Home use
- User friendly



SAS-COV-2 Antigen Kit (for Medical Center)

Rapid detection of COVID-19 virus

(Rapid Test!)

SARS-CoV-2 Antigen Rapid Test for rapid and qualitative detection of corona virus, which is collected from human nasal swab. This test is performed by health professionals and Health Centers (HCs). Due to the short response time in this test, it causes rapid disruption of the contamination chain, so it has been introduced as an efficient solution and alternative to the molecular method Antigen Rapid. Test can replace the PCR testing.

KIT SPECIFICATIONS:

- Immunochromatographic method
- Sampling type: nasopharynx
- Shelf life: 24 months

● Specificity:

98.5%

● Sensitivity:

87%

ADVANTAGES OF THE KIT:

- **Reading time 20 minutes**
- For early detection of COVID-19 virus
- High accuracy
- Reasonable price
- Similar accuracy as PCR





SARS-CoV-2 Antigen Multiplex Spike & Nucleocapsid Rapid Kit

Detect different type of COVID-19 virus mutation

(Rapid Test!)

The two main antigens (Surface molecules on pathogens) for coronavirus SARS-CoV-2 are the nucleocapsid (N) protein and the spike (S) protein. Nucleocapsid (N) protein is abundantly expressed during infections and also has high immunogenic activity. The S protein is highly immunogenic since it is located on the surface of the virus.

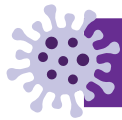
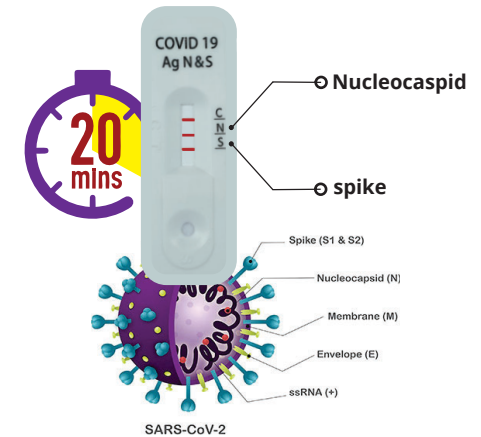
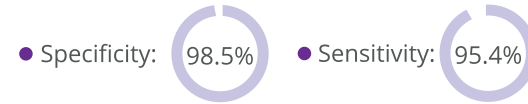
If a colored line appears in the S or N area in the cassette, the covid-19 will be positive. as a result mutations in N and S proteins detect simultaneously and distinctly. Depending on whether the infection is caused by protein S or N, the procedure of treatment will change and will eventually improve the treatment procedure.

KIT SPECIFICATIONS:

- For early detection of COVID-19 virus
- Immunochromatographic method
- Sample type: Nasopharynx

ADVANTAGES OF THE KIT:

- **Reading time: 20 minutes**
- Differential and rapid detection of spike and nucleocapsid proteins simultaneously
- Reasonable price



SARS-CoV-2 Neutralizing-Ab Rapid Test

Measure of Immune after vaccination

(Rapid Test!)

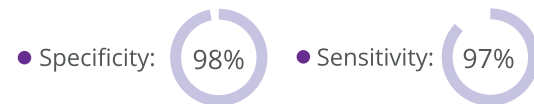
Neutralizing antibodies play an important role in active immunization by vaccination. Serum neutralizing antibodies appear in most people's bodies 2-3 weeks after SARS-CoV-2 vaccination and persist for several months. After covid-19 vaccination 20% of people will not immune due to lack of neutralizing antibodies. The difference between this kit and IgM antibody detection kits is that IgM antibody is produced by the immune system 2-3 days after a person infected to the covid-19, but neutralizing antibodies are produced by the immune system after vaccination and their presence is a confirmation of the success of vaccination.

KIT SPECIFICATIONS:

- Immunochromatographic method
- Sample type: serum, plasma and whole blood

ADVANTAGES OF THE KIT:

- **Reading time 10 minutes**
- High accuracy
- Reasonable price





COVID-19 Influenza Multiplex Assay

Detection of Influenza & COVID-19

(PCR!)

Qualitative diagnostic kit that can simultaneously detect COVID-19 virus and influenza in respiratory secretion samples (nasopharyngeal swab, oropharyngeal swab, etc.) prepared from patients suspected of being infected with the virus.

KIT SPECIFICATIONS:

- Design based on technology of Real time PCR method and based on probe hydrolysis
- with 3 color channels and a separate detector for each channel
- Use of RNase P internal control gene to validate results
- One Step Real time RT-PCR technology
- Very low detection limit and equivalent to the most accurate and sensitive kits in the world today
- Shelf life: 12 months

ADVANTAGES OF THE KIT:

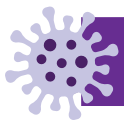
- Simplicity and fast analysis
- Eliminate the detection stage after reproduction
- Minimize false positive response
- Time afford: get results in less than an hour

● Specificity:

96.2%

● Sensitivity:

100%



Rapid diagnostic test for COVID-19 based on IgM/IgG antibody

Measure of Immune after infected to COVID-19

(Rapid Test)

In people with the Covid-19 virus, IgM is produced as the first anti-viral antibody. Over time, a more specific antibody called IgG is released. The amount of these antibodies gradually increases and stays in the blood for a while. The presence of IgG and IgM antibodies against this virus indicates that a person is in contact with the virus and that the immune system responds to the virus.

Immunoglobulin IgG: This Antibody has a very stable half-life of 7 to 21 days, and a positive test result is a sign of a person having the virus in the past.

Immunoglobulin IgM: A positive IgM test is a sign of infection in the early days (2-3 days) after Covid-19 infection.

KIT SPECIFICATIONS:

- Based on immunochromatographic method
- Qualitative measurement
- Sample type: whole blood , serum or plasma

ADVANTAGES OF THE KIT:

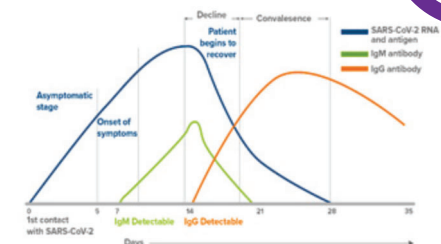
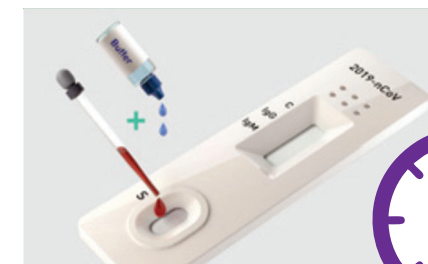
- Reading time: 10 minutes
- Low cross reactivity
- Reasonable price
- High quality

● Specificity:

97.77%

● Sensitivity:

95%



COVID-19 Diagnostic Kits



Elisa Kit

COVID-19 Neutralizing-Ab ELISA kit

Neutralization antibodies are released by B lymphocytes that bind to the receptor-binding domain (RBD) in the SARS-Cov-2 virus spike protein and prevent the surface molecules of the pathogen from binding to the body surface receptor on cells called angiotensin-converting enzyme2 (ACE2) and can decrease the viral infection of cells and neutralize the foreign agent.

Product name	Package	Detection limit	Specimen	Shelf life
COVID-19 Neutralizing -Ab ELISA kit	96/192	9.75 ng/ml	serum or human plasma	12 months

Measure of immune after Infected

Covid-19 IgM / IgG Detection ELISA kit

The human immune system produces two types of IgM and IgG antibodies against the COVID-19 virus. In people with the Covid-19 virus, IgM is produced as the first anti-viral antibody. Over time, a more specific antibody called IgG is produced.

Product name	Package	Detection limit	Specimen	Shelf life
Covid-19 IgM / IgG Detection ELISA kit	96/192	6.25 - 100 ng/mL	serum or human plasma	12 months

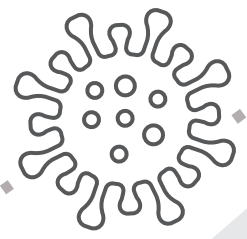
Measure of immune after Infected

COVID-19 Total Ab Detection ELISA Kit

The COVID-19 Total Ab Detection kit is an ELISA test for the qualitative detection of total corona virus antibodies (IgG, IgM & IgA) in human serum and plasma samples.

Product name	Package	Detection limit	Specimen	Shelf life
COVID-19 Total Ab Detection ELISA Kit	96/192	5 IU/mL	serum or human plasma	12 Months

Measure of immune after vaccination



Molecular Kit

COVID-19 RT-PCR Detection Kit

Qualitative diagnostic kit capable of simultaneously identifying the ORF1ab, N gene from SARS-CoV-2. This kit is used to identify COVID-19 in samples of respiratory secretions (nasopharyngeal swab, oropharyngeal swab, etc.) prepared from patients suspected of having the virus and the results are achieved in less than an hour.

Product name	Package	Detection limit	Specimen	Shelf life
COVID-19 RT-PCR Detection Kit	100 reaction	10 µL DNA	nasopharyngeal and oropharyngeal swab	12 months

PCR-COVID-19

COVID-19 Influenza A&B Multiplex Assay

RT-PCR kits for the simultaneous detection of 3 main respiratory viruses: SARS-CoV-2 (N gene), Influenza A (M gene), Influenza B (NS1 gene). This kit is used to identify these viruses in samples of respiratory secretions (nasopharyngeal swab, oropharyngeal swab, etc.) prepared from patients suspected of having the virus.

Product name	Package	Detection limit	Specimen	Shelf life
COVID-19 Influenza A&B Multiplex Assay	100 reaction	10 µL DNA	nasopharyngeal and oropharyngeal swab	12 months

PCR-Influenza COVID-19

Respiratory Virus Panel

Respiratory Viral Panel Real Time PCR Detection Kit is designed for simultaneous detection of SARS-CoV-2, influenza A, influenza B, parainfluenza, adenovirus, metapneumovirus (MPV) and RSV in respiratory samples from patients with signs and symptoms of respiratory viral infection.

Product name	Package	Detection limit	Specimen	Shelf life
Respiratory Virus Panel	100 reaction	10 µL DNA	nasopharyngeal and oropharyngeal swab	12 months

Respiratory Infections



Infectious Diseases Diagnostic Kits

General Information:

In our continuing efforts for detection of infectious diseases, we provide a comprehensive line of rapid serological assays in different formats for a broad range of infectious disease categories.

All of these products are cost-effective and user-friendly and offer high specificity and exquisite sensitivity. We provide innovative, high quality products that help improve the speed and accuracy of disease diagnosis so that effective treatment can be initiated speedily.

Technical Advantages:

- High sensitivity and specificity
- Early detection right after the onset of the symptoms
- User friendly



HCV Antibody Rapid Test (Hepatitis C)

Diagnosis of Hepatitis C

(Rapid Test)

As opposed to the other hepatitis virus, infection with the hepatitis C virus (HCV) leads, in a high number of cases, to chronic liver disease. The HCV Anti-Virus Antibody Detection Kit is a rapid screening for the initial detection of the presence of HCV in human blood or serum samples. The response time of this test is short (10-20 minutes). This test is intended to diagnose patients with hepatitis C virus infection.

KIT SPECIFICATIONS:

- Immunochromatographic method
- Sample type: whole blood, serum or plasma
- Shelf life: 24 months
- Easy working method
- Qualitative assessment based on the latest

ADVANTAGES OF THE KIT:

- **Reading time (10-20 minutes)**
- **For early detection of HCV virus**
- Reasonable price
- User friendly

● Specificity: 100%

● Sensitivity: 99.51%



HBs Ag Rapid Test (Hepatitis B)

Diagnosis of Hepatitis B

(Rapid Test)

HBsAg rapid detection kit for screening to initial detection of the presence of HBsAg virus in human blood or serum samples. It can cause chronic infection and puts people at high risk of death from cirrhosis and liver cancer

KIT SPECIFICATIONS:

- Immunochromatographic method
- Sample type: whole blood, plasma or serum
- Easy working method
- Qualitative assessment based on the latest

ADVANTAGES OF THE KIT:

- **Reading time 10-20 minutes**
- Reasonable price
- High quality
- User friendly

● Specificity: 100%

● Sensitivity: 99.44%





HIV Antibody Rapid Test

Diagnosis of HIV/AIDS

(Rapid Test)

The human immunodeficiency virus (HIV) is a retrovirus that causes acquired immunodeficiency syndrome (AIDS). There are two types of HIV responsible for human infections, HIV-1 and HIV-2, which differ in their virulence and prevalence. Most reported cases of AIDS around the world have been attributed to HIV-1. The HIV Anti-Virus Antibody Detection Kit is a rapid screening (reading time 10-20 minutes) for the initial detection of the presence of HIV in human blood or serum samples.

KIT SPECIFICATIONS:

- Immunochromatographic testing
- Sample type: Human blood or serum samples
- Shelf time: 24 months

● Specificity:

100%

● Sensitivity:

99.44%

ADVANTAGES OF THE KIT:

- Reading time (10-20 minutes)
- For early detection of HIV types I & II
- Reasonable price
- User friendly
- High quality



Tuberculosis (TB) Rapid Test

Diagnosis of Tuberculosis

(Rapid Test)

Tuberculosis (TB) remains the leading cause of death from a curable infectious disease, despite the availability of short-course therapy that can be both inexpensive and effective. Clinical management of cases in developing countries is hampered by the lack of a simple and effective diagnostic test. Correct diagnosis of TB is needed to improve treatment, reduce transmission, and control development of drug resistance

KIT SPECIFICATIONS:

- Detection limit: 3×10^3 cells/ml
- Sample type: whole blood, serum or plasma
- Shelf life: 24 months

● Specificity:

92%

● Sensitivity:

84.2%

ADVANTAGES OF THE KIT:

- Test result: 15-20 minutes
- Excellent performance
- High grade of standardization



15-20 mins

INFECTIOUS Diseases



Crimean-Congo

(CCHF- IgG /IgM) ELISA test

Human Crimean-Congo Hemorrhagic Fever Virus IgG/IgM (Colorectal Cancer)

Crimean-Congo hemorrhagic fever (CCHF) is a widespread tickborne viral disease, a zoonosis of domestic animals and wild animals, that may affect humans. CCHF outbreaks constitute a threat to public health services as the virus can lead to epidemics, has a high case fatality ratio (10-40%), potentially results in hospital and health facility outbreaks, and is difficult to prevent and treat.

Product name	Package	Detection limit	Specimen	Shelf life
(CCHF- IgG /IgM) ELISA test	96 assays	0.1 pg/mL	0.1 pg/mL	6 months

HBS-Ag Elisa test

HBsAg ELISA kits are assays designed to detect the surface antigen of Hepatitis B virus. Hepatitis B is a double-stranded DNA virus that can cause Hepatitis B disease in acute or chronic form. Hepatitis B is a potentially life-threatening liver infection caused by the hepatitis B virus (HBV). It is a major global health problem. It can cause chronic infection and puts people at high risk of death from cirrhosis and liver cancer

Product name	Package	Detection limit	Specimen	Shelf life
HBsAg Elisa test	96 test	0.2 ng/mL	Serum or plasma	12 months

Hepatitis B

Sexual Disease

STD (Sexual Transmitted Disease) detection test

(Chlamydia, Neisseria, Mycoplasma, Troponin, Plasma urea)

Sexually transmitted Disease (STD) represent a group of diseases that affect the sexual and reproductive health of millions of people, being a public problem of interest. Etiological agents responsible for STD include fungi, bacteria, parasites and viruses.

Product name	Package	Detection limit	Specimen	Shelf life
STD detection test:	96 assays	<200 copies/ μ L	urogenital, endocervical and urine	6 months

HCV-Ab Elisa test

Hepatitis C infects the liver and can go undetected for many years, as it does not always cause symptoms. But long-term HCV infections can lead to scarring of the liver (cirrhosis), liver cancer, liver failure, and other serious medical problems. The hepatitis C virus is found in the blood and other body fluids of a person with this infection.

Product name	Package	Detection limit	Specimen	Shelf life
HCV-Ab Elisa test	96 test	5 to 50 IU/mL	Serum or plasma	12 months

Hepatitis C

Dengue

Dengue ELISA test: Diagnosis of myocardial infarction

Dengue ELISA kits are assays designed to detect markers expressed by the Dengue virus or, alternatively, antibodies produce against it. The Dengue virus, which causes Dengue fever, is a single-stranded RNA virus of the Flaviviridae family containing multiple serotypes.

Product name	Package	Detection limit	Specimen	Shelf life
Dengue ELISA test	96 assays	1 ng/mL	Serum or plasma	6 months

HIV-Ab Elisa test

Human immunodeficiency viruses (HIV) are retroviruses transmitted via sexual contact., parenteral and perinatal pathways or the placenta. Serological evidence of HIV infection may be obtained by testing for HIV antigens or antibodies in serum of individuals suspected of HIV infection.

Product name	Package	Detection limit	Specimen	Shelf life
HIV-Ab Elisa test	96 test/case	5pg/ml	Serum or plasma	12 months

HIV

Gastrointestinal Infection

H.Pylori Ag Rapid test

Diagnosis of Helicobacter pylori and gastrointestinal tract

Helicobacter pylori (H. pylori) a gram-negative, helical, rod-shaped bacterium, colonizes the gastric mucosa of approximately one-half of the world population.

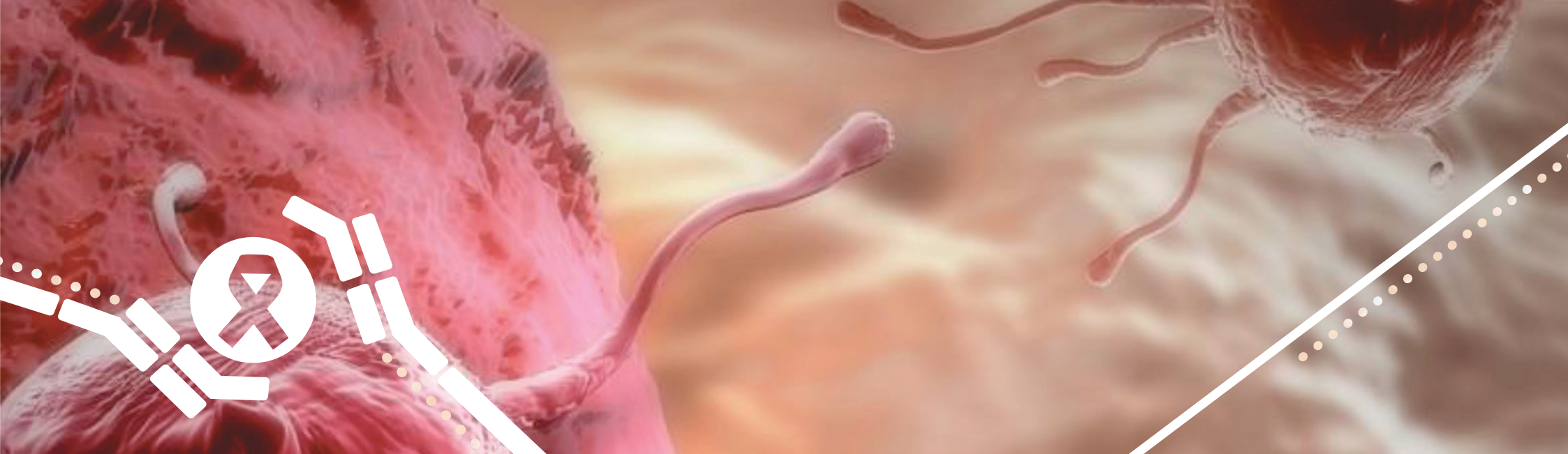
Product name	Package	Detection limit	Specimen	Shelf life
H.Pylori Ag Rapid test	20 test/case	1 ng/mL	stool	24 Months

HPV detection test: (Human papilloma virus)

Human papillomaviruses (HPV) belong to the family of Papilloma viridae and are small double stranded DNA viruses. More than 100 types of HPV have been identified, of which certain HPV types, known as high-risk HPV (hrHPV) like HPV 16 and 18 are associated with the induction of mucosal lesions that can progress to malignancy.

Product name	Package	Detection limit	Specimen	Shelf life
HPV RT-PCR detection kit	100 test	0.62 pg/ml - 1.39 pg/ml	vaginal brush & Cervical specimen	6 months

HPV



Tumor Markers Diagnostic Kits

General Information:

Cancer arises when the cell DNA gets irreversibly damaged. The possible factors for developing cancer can be environmental exposure, inheritance, and mutation of DNA that occurs in the cell division process. Early detection of cancer is very essential for better Prognosis of treatment and to control the severity.

Technical Advantages:

- Quick and sensitive method with low limits of detection
- Quantitative results
- Simple test format

Tumor Markers



Colorectal Cancer

(Fecal Occult Blood) FOB detection test

Colorectal Cancer (Diagnosis of blood in the stool)

The presence of blood or its remains in the stool can be a sign of colon and rectum cancer or other problems such as polyps, hemorrhoids, anal fissures, ulcers, inflammation and intestinal bleeding.

Product name	Package	Detection limit	Specimen	Shelf life
FOB Rapid test	20 test/case	50 ng/mL	stool	24 months

BRAF detection test

Targeted therapy

BRAF oncogene is among the most frequently mutated kinases in human cancer. Mutations in codon V600 have been reported in different types of cancers including 40-50% of melanomas, 10-70% of thyroid carcinomas, 10% of colorectal cancers and 3-5% of non-small cell lung cancers (NSCLC).

Product name	Package	Detection limit	Specimen	Shelf life
BRAF RT-PCR detection test	100 reaction	5-10 ng/ml DNA	Tissue	24 Months

Cancer Marker

Prostate Cancer

PCA3 detection test

(Prostate cancer- Much higher predictive value than PSA-Prevention of recurrent prostate biopsies)

Prostate cancer antigen 3 (PCA3) is the most specific biomarker for an early diagnosis of prostate cancer (PCa) and it is present in increased amounts (over-expressed) in about 90% of prostate cancers.

Product name	Package	Detection limit	Specimen	Shelf life
PCA3 RT-PCR detection test	100 test	4-7 ng/ml	Blood and urine	18 months

CEA Elisa test

Gastrointestinal Cancer-Pregnant Mother Screening/Transmission of

Gastrointestinal Cancers to the Fetus

CEA is encoded by the CECAM5 gene which produces a cell adhesion molecule consisting of an Ig variable region-like amino-terminal domain followed by up to six Ig constant region-like domains anchored to the cell membrane by either a glycosylphosphatidylinositol (GPI) moiety or a proteinaceous transmembrane and cytoplasmic domain.

Product name	Package	Detection limit	Specimen	Shelf life
CEA 125 Elisa test	96 assays	2.5 ng/ml - 80 ng/ml	Human Serum, Plasma	6 months

Gastrointestinal Cancers

Cancer Marker

KRAS detection test

Targeted therapy

Colorectal cancer (CRC) is among the most prevalent cancers worldwide. Treatment with monoclonal antibodies against Epidermal Growth Factor Receptor (Anti-EGFR) has shown to be effective for CRC patients. However, Anti-EGFR would be in-effective in presence of some KRAS mutations including mutations in codons 12 and 13.

Product name	Package	Detection limit	Specimen	Shelf life
KRAS RT-PCR detection test	100 reaction	50 µL DNA	Blood and urine	24 months

AFP Elisa test

Gastrointestinal Cancer-Pregnant Mother Screening/Transmission of

Gastrointestinal Cancers to the Fetus

Alpha-fetoprotein (AFP) is a glycoprotein with a molecular weigh of approximately 70,000 Da. AFP is normally produced during fetal and neonatal development by the liver, yolk sac, and in small concentrations by the gastrointestinal tract.

Product name	Package	Detection limit	Specimen	Shelf life
AFP Elisa test	96 assays	0-300 ng/mL	Serum	12 months

Gastrointestinal Cancers

CH50 Elisa test

Breast and gastrointestinal Cancer

This method is also suited to assess the effects of pharmaceuticals on inhibition or consumption of complement components. Activation of the complement system by biomaterials or pharmaceuticals can result in consumption of complement proteins, which reduces the CH50 level.

Product name	Package	Detection limit	Specimen	Shelf life
CH50 Elisa test	96 assays	100 U/ml-1.56 U/ml	Serum	12 months

Breast and gastrointestinal Cancer

Tumor Markers



Ovarian cancer

CA 125 Elisa test (Ovarian cancer)

Human Carbohydrate Antigen 125 (CA125) ELISA Kit looks for certain proteins in blood. Ovarian cancer can be the reason for these proteins, but other conditions can cause them to be in blood as well. 80% or more of women with ovarian cancer have high levels of CA-125.

Product name	Package	Detection limit	Specimen	Shelf life
CA 125 Elisa test	96 assays	1.56-100U/mL	Human Serum, Plasma Or Cell Culture Supernatant	6 months

AMH ELISA Test

Anti-Mullerian Hormone (Infertility-Ovarian cancer)

AMH can serve as a molecular biomarker for relative size of the ovarian reserve and can also be used as a marker for ovarian dysfunction, such as in women with polycystic ovary syndrome (PCOS).

Product name	Package	Detection limit	Specimen	Shelf life
AMH Elisa test	96 assays	0.31-20 ng/mL	Serum, Plasma	24 months

Ovarian cancer

prostate cancer

PSA Elisa test

Diagnosis of prostate cancer

Prostate-specific antigen (PSA) is a glycoprotein that is produced by the prostate gland, the lining of the urethra, and the bulbourethral gland. Normally, very little PSA is secreted in the blood. Increases in glandular size and tissue damage caused by benign prostatic hypertrophy, prostatitis, or prostate cancer may increase circulating PSA levels.

Product name	Package	Detection limit	Specimen	Shelf life
PSA Elisa test	96 assays	10.24 pg/ml - 2500 pg/ml	Human Serum, Plasma Or Cell Culture Supernatant	6 months

Free-hCG Elisa test

The development of specific assay makes it possible for early detection of beta hCG during pregnancy and this has been vital in screening for Down syndrome and trisomy 18. Pregnancies tend to have higher levels of free beta hCG compared to other others where the fetus has Down syndrome and where the fetus has trisomy 18 then the levels of HCG are much lower. There are also evidence that high levels of β -hCG/hCG may be associated with chorionepithelioma, seminoma, embryonal cell carcinoma, neoplasms of trophoblastic and nontrophoblastic origin (eg. hydatiform mole).

Product name	Package	Detection limit	Specimen	Shelf life
Free-hCG Elisa test:	96 assays	0.2 - 200 ng/ml	Plasma, Serum	24 months

Fertility

NRAS detection test

Targeted therapy

NRAS is a member of the RAS family of small GTPases and plays a central role in the MAPK signaling pathways. NRAS has been implicated in the pathogenesis of several cancers. NRAS mutations are particularly common in melanoma, hepatocellular carcinoma, myeloid leukemias, and thyroid carcinoma.

Product name	Package	Detection limit	Specimen	Shelf life
NRAS RT-PCR detection test	100 reaction	5-10 ng/ml DNA	Tissue	24 months

Cancer Marker





Fertility Diagnostic Kits



General Information:

Infertility affects nearly 15% of couples wishing to conceive and is generally attributed equally to males and females. Infertility is suspected to have a genetic cause in 15% of males and 10% in females.

Fertility tests are an essential part of fertility evaluation and treatment. Through testing, doctor can possibly discover what's preventing male and female from achieving pregnancy.

Technical Advantages:

- Monitoring normal pregnancy
- Early detection or screening of spontaneous abortion ectopic pregnancy
- Simple pregnancy test determining whether it is pregnant or not
- Recurrent Miscarriage and infertility - Coagulopathy Fetal screening tests



Sperm Count (sp10) test (for self test)

Determine the number of Sperm

(Rapid Test)

The Sperm Concentration Rapid Test is biochemical assay for in vitro qualitative estimation of sperm concentration in human semen as an auxiliary aid in clinical diagnosis of the infertility and/or pregnancy planning by self-evaluation of sperm concentration above or below the required concentration for successful pregnancy.

sperm count rapid test is a home screening kit to test sperm in semen.

KIT SPECIFICATIONS:

- Easy and fast working method
- Sampling type: sperm
- Very fast assessment of sperm concentration in just 7 minutes

● Specificity:

100%

● Sensitivity:

96%

ADVANTAGES OF THE KIT:

- One of the first sperm health test kits
- Diagnostic sensitivity at 15 million sperm/ml (WHO 2010 standard)
- More affordable and easier than going to the lab
- Home use
- User friendly



hCG Rapid Test

Baby check

(Rapid Test)

hCG is glycoprotein hormone secreted by the placenta shortly after implantation. In normal pregnancy, hCG can be detected in both urine and serum as early as 7 to 10 days after fertilization. The appearance of hCG and its subsequent rapid rise in urine and serum after conception during early gestational growth makes it an excellent marker.

KIT SPECIFICATIONS:

- Detection limit: 25 mIU/mL
- Sample type: Urine
- Shelf life: 36 months

● Specificity:

100%

● Sensitivity:

99%

ADVANTAGES OF THE KIT:

- Simple and easy: result in 5 minutes & one step procedure
- Excellent performance
- suitable for early pregnancy test





Fetal screening test

aFP Elisa test

Alpha-fetoprotein (AFP) is a fetal protein that is initially produced in the fetal yolk sac and liver. A small amount is produced by the gastrointestinal tract. Lower maternal serum AFP concentrations have been associated with an increased risk for genetic conditions such as trisomy 21 (Down syndrome) and trisomy 18 (Edwards syndrome).

Product name	Package	Detection limit	Specimen	Shelf life
aFP Elisa test	96 assays	100 U/ml- 1.56 U/ml	Serum	9 months

Fetal screening test

Inhibin A Elisa test

Human inhibin A is found to be the predominant form of inhibin within the maternal circulation after 4 weeks of gestation. There have also many applications for determining levels of human inhibin A during the early stages of pregnancy such as preeclampsia, miscarriage, fetal growth restriction and Down's syndrome (Trisomy 21).

Product name	Package	Detection limit	Specimen	Shelf life
Inhibin A Elisa test	96 assays	0.4 pg/mL- 80 pg/mL	Serum or plasma	12 months

Fetal screening test

u-E3 Elisa test

Unconjugated estriol (uE3) is a form of estrogen that is produced by the fetus through metabolism. This process involves the liver, adrenals, and the placenta. Some of the unconjugated estriol crosses the placenta and can be measured in the mother's blood. Levels rise around the 8th week and continue to increase until shortly before delivery. uE3 may be used with AFP and hCG as a Triple Screen in pregnant women during their 3rd trimester to diagnose down-syndrome.

Product name	Package	Detection limit	Specimen	Shelf life
u-E3 Elisa test	96 assays	0.2 - 200 ng/ml	Plasma, Serum	24 months

Ovulation Test

Ovulation Test: LH (Luteinizing Hormone) Test

The Ovulation Predicting test is a qualitative immunoassay for the detection of human luteinizing hormone (LH) in Human Urine to predict the occurrence of ovulation.

Product name	Package	Detection limit	Specimen	Shelf life
LH Rapid test	1 test/case	50 mIU/ml	Urine	36 months

Factor V detection test

Factor V Leiden is an inherited disorder of blood clotting and is also associated with a two- to threefold increase in relative risk of pregnancy loss, and possibly other pregnancy complications such as preeclampsia, fetal growth retardation and placental abruption.

Product name	Package	Detection limit	Specimen	Shelf life
Factor V (Leiden) RT-PCR detection test	100 reaction	up to 2 ng/µl	Whole blood	24 months

Factor II detection test

G20210A mutation in factor II or prothrombin gene increases the risk of venous thrombosis about 2 to 7 times. It has also been linked to increased risk of pregnancy loss.

Product name	Package	Detection limit	Specimen	Shelf life
Factor II RT-PCR detection test	100 reaction	up to 2 ng/µl	Whole blood	24 months

PAI-1 detection test

PAI-1 (Plasminogen Activator Inhibitor 1) is a 52 kDa glycoprotein. In the presence of additional thrombosis-related mutations, the 4G allele is a risk factor for arterial and venous thrombosis as well as for pregnancy complications. The frequency of the 4G allele is also significantly higher in women suffering from complications in pregnancy, early pregnancy loss or preeclampsia.

Product name	Package	Detection limit	Specimen	Shelf life
PAI-1 detection test:	96 assays	up to 2 ng/µl	Whole blood	6 months

MTHFR detection test

MTHFR stands for Methylene tetrahydrofolate reductase which is a key regulatory enzyme in folate and homocysteine metabolism. MTHFR gene variances are more frequently found in women with infertility and are associated with fetal development issues. Some of those developmental and pregnancy problems include: miscarriage, blood clotting irregularities, autism, spina bifida, and Down's syndrome.

Product name	Package	Detection limit	Specimen	Shelf life
MTHFR detection test:	100 reaction	up to 2 ng/µl	Whole blood	24 months

Factor XIII detection test

Factor XIII, first called fibrin stabilizing factor, was discovered in 1948. It is involved in the last stage of coagulation and participates in clot preservation. It also participates in wound repair and healing, maintaining pregnancy and acts as proangiogenesis.

Product name	Package	Detection limit	Specimen	Shelf life
Factor XIII RT-PCR detection test	100 reaction	up to 2 ng/µl	Whole blood	24 months

detection of coagulopathy

prediction and diagnosis by computational genomic method and personalized medicine

Our services

Definition:

We provide diagnosis, screening, monitoring, wellness and prediction services for individuals through genetic data analysis.

For people with a disease, we constantly control their states and treat them based on their genetic profiles. The other statement is the predictive and pre-symptomatic test which used when no symptoms have yet appeared, but there is a probability of carrying any genetic change in body and appearing the disease during their lives.

These diseases are influenced by multiple genes (Inherited from family) and in combination with environmental factors (epigenetic). Therefore, personalized medicine can affect people lifestyle Which should be investigative with continuous controls and treatments of people

Methodology

We study genetic data using advanced algorithms, in framework of grid computing and through powerful processing servers, and then it is possible to achieve results such as individual characteristics and specification, investigation and prediction of diseases based on the individual genetic profile. In this regard, complex computational methods are used due to the large volume of genetic data.

Services:



Wellness

Discover how your genes can influence certain lifestyle choices



Prediction

Prediction of the disease later in life when no symptoms have yet appeared.



Diagnosis

Early stage diagnosis of disease enabling individualized treatment procedure



Monitoring

Active monitoring of treatment response to medicine and disease progression

Genetic prediction and diagnosis of cancer

Do you know that out of every 3 people, one of them suffers from cancer?

Prostate cancer:	The highest rates of cancer in men
breast cancer:	The highest rates of cancer in women
Cervical cancer:	Early detection 90% equals survival
Abdominal cancer:	The function of prevention by changing the system of living
gastrointestinal cancer:	The third most common cancer



Genetic prediction and diagnosis of nervous system diseases

Do you know that out of every 6 children, one child suffers from nerve disturbance?

Alzheimer's disease	The most important cause of death in the elderly
Parkinson's:	Men are 1.5 times more likely to be infected
MS:	Women are twice as likely as men to be infected
autism:	The growth rate of consciousness is equivalent to 15% per year
schizophrenia:	Third place mental disability



Genetic prediction and diagnosis of cardiovascular diseases

Early diagnosis leads to timely treatment and prevention of fatal complications such as rupture or rupture of arteries.

- Reduce the risk of coronary heart disease and heart attack or sudden cardiac arrest
- Monitoring, treatment, and administration of pills and medications based on a person's genetic data can begin quickly
- Arrhythmias
- Congenital heart disease
- Cardiomyopathy
- Hypercholesterolemia
- Coronary artery disease





The effect of genes on skin condition and wellness

By examining genetic specifications, we warn you of the dangers that threaten the freshness and vitality of your skin. We examine 99 genetic points in 77 genes. The purpose of this report is to provide information about the effect of genes on the condition of your skin and reduce your skin costs in the long run

What are the benefits of skin and beauty genetic reporting?

- Full awareness of your health status in the field of skin and beauty
- Prevent wrinkles and aging of your skin
- Provide skin advice tailored to your genetic status
- Fix your skin problems more easily



Genetic testing of Nutrition

The most important factor that can be important in setting a great diet and lifestyle is to gather all the information of the person. By receiving the information we need, as well as "you" genetic data, we can access all the dimensions that are of interest in medicine and nutrition.

But what will we achieve by using genetic data?

- Examine the behavior of "you" in exchange for carbohydrates, fats and proteins
- Examine foods that are good or bad for you
- Prevention of diseases that will threaten "your" health
- Find the best meals from the combination of the above information for "you"



Prescribing pills and drugs and therapeutic operations due to genetic profile of individuals

- Targeted treatment of some diseases (Depression, cancers, brain diseases such as dementia and neurodegenerative diseases such as Alzheimer's and Parkinson's)
- Production and prescription of new drugs through bioinformatics and pharmacogenomics
- Determining the dose of chemotherapy drug based on the individual's personal medicine
- Infertility treatment based on personal medicine





Veterinary infectious diseases

Veterinary infectious diseases are factors that impact the health of livestock, domestic animals and wildlife. Their study includes infectious-disease-causing pathogens, epidemiology, diagnostic methods, molecular evolution, immune responses, treatment and prevention.

Veterinary infectious diseases



Rabies

Rabies Elisa kit

Rabies ELISA kits are assays designed to detect the rabies virus or, alternatively, antibodies produced against it.

Product name	Package	Detection limit	Specimen	Shelf life
Rabies Elisa test	96 assays	450 nm	Serum, plasma	18 months

Rift Valley Fever

Rift Valley Fever Elisa kit

Rift Valley Fever Virus is a ssRNA virus from the Phlebovirus genus. The virus is endemic to Africa and is found in domestic ruminants; cows, goats, camels, and sheep.

Product name	Package	Detection limit	Specimen	Shelf life
Rift Valley Fever Elisa kit	96 assays	1 - 64 ng/mL	cell culture supernatants, serum	24 months

FQ

FQ Elisa Kit

The test is a direct competitive ELISA based on the recognition of Fluoroquinolones by specific antibodies.

Product name	Package	Detection limit	Specimen	Shelf life
FQ Elisa test	96 assays	0.625 - 25.0 ng/mL	muscle, honey, milk, milk powder, egg, urine	24 months

Akabane

Akabane Elisa kit

The Akabane (AKA) and Bluetongue (BT) viruses are nonzoonotic and mosquito-borne viruses carried by livestock and wild animals.

Product name	Package	Detection limit	Specimen	Shelf life
Akabane Elisa test	96 assays	1 - 64 ng/mL	Serum, plasma	24 months

West Nile Elisa kit

West Nile Virus (WNV) is an enveloped RNA flavivirus virus whose infection causes West Nile fever.

Product name	Package	Detection limit	Specimen	Shelf life
West Nile Elisa test	96 assays	31.3 ng/mL	Serum, plasma	24 months

West Nile

Mycoplasma

Mycoplasma Elisa kit

Mycoplasma is a broad genus of bacteria, some of which are pathogenic in humans. Some infectious species such as *M. pneumoniae*, *M. hominis*, *M. pulmonis*, and *M. genitalium*.

Product name	Package	Detection limit	Specimen	Shelf life
Mycoplasma Elisa kit	96 assays	2 ng	Serum, plasma	18 months

Chlamydia

Chlamydia Elisa kit

Chlamydia commonly refers to the sexually transmitted disease caused by the bacterium *Chlamydia trachomatis*.

Product name	Package	Detection limit	Specimen	Shelf life
Chlamydia Elisa test	96 assays	1 - 64 ng/mL	Serum, plasma	18 months

Foot-and-mouth disease

FMD Elisa kit

Foot-and-mouth disease virus (FMDV) is a member of the genus Aphthovirus of the family Picornaviridae, which is divided into seven serotypes with no cross-protection conferred among the serotypes.

Product name	Package	Detection limit	Specimen	Shelf life
FMD Elisa test	96 assays	0.1 ng	Serum	18 months



Veterinary infectious diseases



Peste des petits ruminants

PPR Elisa kit

Peste des petits ruminants (PPR) is an acute febrile, viral, disease of small ruminants with great economic importance.

Product name	Package	Detection limit	Specimen	Shelf life
PPR Elisa test	96 assays	10 pg/mL-160 pg/mL	Cell Culture Supernatants, Serum, Plasma	18 months

Bovine Viral Diarrhoea

BVD Elisa kit

BVD (Bovine Viral Diarrhoea) is a viral disease which can infect cattle of any age. Infection of a pregnant cow or heifer can result in the birth of a persistently infected BVD positive calf.

Product name	Package	Detection limit	Specimen	Shelf life
BVD Elisa test	96 assays	1 - 64 ng/mL	Serum	24 months

Rabies

Rabies RT-PCR Detection kit

Rabies virus is an RNA virus belongs to the order Mononegavirales. The first symptoms of rabies may be very similar to those of the flu including general weakness or discomfort, fever, or headache.

Product name	Package	Detection limit	Specimen	Shelf life
Rabies RT-PCR Detection kit	100 test	< 100 copies	brain tissue	24 months

Akabane

Akabane RT-PCR Detection kit

Akabane virus is a teratogenic Orthobunyavirus widely distributed across the world but not in New World countries. It affects mainly cattle.

Product name	Package	Detection limit	Specimen	Shelf life
Akabane RT-PCR Detection kit	100 test	10 copies/reaction	tissue	12 months

West Nile RT-PCR Detection kit

West Nile virus (WNV) is a member of the Flavivirus genus and can cause neurological disease and death in people.

Product name	Package	Detection limit	Specimen	Shelf life
West Nile RT-PCR Detection kit	100 test	10 copies/reaction	tissue	12 months

West Nile

Schmallenberg RT-PCR Detection kit

The Schmallenberg virus (SBV) is an enveloped, single-stranded RNA virus. It belongs to the Bunyaviridae family, within the Orthobunyavirusgenus. SBV outbreaks have been reported to the OIE as an emerging disease that affects ruminants.

Product name	Package	Detection limit	Specimen	Shelf life
Schmallenberg RT-PCR Detection kit	100 test	1-10 copies per reaction	ruminant blood, serum and organ	12 months

Schmallenberg

IBV Elisa kit

Infectious bronchitis virus (IBV) is the cause of a highly contagious respiratory disease that produces high morbidity in all ages of chickens and high mortality in chicks less than 6 weeks old.

Product name	Package	Detection limit	Specimen	Shelf life
IBV Elisa kit test	96 assays	0.2 - 200 ng/ml	Serum and yolk	24 months

Infectious bronchitis

Mycoplasma GalliSepticum Elisa kit

Mycoplasma gallisepticum (MG) is important avian pathogen responsible for chronic respiratory disease of chicken and turkeys, which result in large economic loss for the poultry industry.

Product name	Package	Detection limit	Specimen	Shelf life
Mycoplasma GalliSepticum Elisa kit	96 assays	31.3 ng/mL	Serum	24 months

Mycoplasma gallisepticum



Veterinary infectious diseases



Infectious bursal disease

Gumboro disease (IBD) antibody ELISA Kit

Infectious bursal disease (IBD) is seen in young domestic chickens worldwide and is caused by infectious bursal disease virus (IBDV). Signs can include depression, watery diarrhea, ruffled feathers, and dehydration.

Product name	Package	Detection limit	Specimen	Shelf life
(IBD) antibody Elisa test	96 assays	0.85µg/mL - 60µg/mL	Serum, Plasma	6 months

Anemia

Anemia Elisa kit

Anemia is the reduction of either the number of red blood cells, or the amount of hemoglobin in the red blood cells. This results in a decrease in the amount of oxygen that the blood is able to carry.

Product name	Package	Detection limit	Specimen	Shelf life
Anemia Elisa kit	96 assays	0.156 ng/ml - 10 ng/ml	Serum, Plasma	6 months

AHPND PCR

AHPND PCR Detection kit

Acute Hepatopancreatic Necrosis Disease (AHPND) is a newly emerging shrimp disease with mortality up to 100 percent caused by *Vibrio parahaemolyticus* which carries a plasmid encoding for two toxins, ToxA and ToxB.

Product name	Package	Detection limit	Specimen	Shelf life
AHPND PCR Detection kit	100 test	1 fg of DNA	gut-associated tissues and organs	6 months

WSSV

WSSV PCR Detection kit

White spot syndrome virus (WSSV) is a major shrimp disease which has caused high mortality rate and economic losses to major shrimp farming countries.

Product name	Package	Detection limit	Specimen	Shelf life
WSSV PCR Detection kit	100 test	up to 10 copies/reaction	tissue	6 months

TSV RT-PCR Detection kit

Taura syndrome virus (TSV) is one of the major diseases in penaeid shrimp and has had a serious negative impact on the economy of the shrimp farming industry, causing mass mortalities of 40 to 95 % in affected postlarval and juvenile populations.

Product name	Package	Detection limit	Specimen	Shelf life
TSV RT-PCR Detection kit	100 test	100 copies of the target sequence from the TSV genome	tissues of ectodermal and mesodermal origin	12 months

TSV

VNN PCR Detection kit

Viral nervous necrosis is a disease found world-wide in many species of marine fish, causing an extremely high mortality of affected larvae and juveniles. The agent of VNN has been identified as a new member of the Nodaviridae.

Product name	Package	Detection limit	Specimen	Shelf life
VNN PCR Detection kit	100 test	~ Up to 10 copies/reaction	tissues of ectodermal and mesodermal origin	12 months

Viral nervous

IRIDO PCR Detection kit

Virus belonging to the family Iridoviridae. Iridoviruses possess large enveloped or nonenveloped virions. Contain a Linear, dsDNA genome.

Product name	Package	Detection limit	Specimen	Shelf life
IRIDO PCR Detection kit	100 test	10 copies/reaction	tissue	12 months

Iridoviruses

KHV PCR Detection kit

Koi herpesvirus (KHV) is a highly contagious virus (family Herpesviridae) that causes significant morbidity and mortality in carp (*Cyprinus carpio*) varieties.

Product name	Package	Detection limit	Specimen	Shelf life
KHV PCR Detection kit	100 test	10 ng to 0.001 pg	Gill tissue	12 months

KHV





FOOD PATHOGENS

General information:

To prevent the spread of food pathogens, rapid and reliable monitoring of food production, storage and trade are essential.

The use of rapid molecular methods is becoming increasingly important for microbiological laboratories.

Reliable and particularly sensitive, real-time PCR is an important method in modern food analysis and delivers substantially faster results than the classical detection methods. In addition to real-time PCR, ELISA assays continue to play an important role in food pathogen detection.

Technical Advantages:

- Rapid detection
- More convenient than conventional methods
- Simple evaluation
- Basic equipment requirement: microplate reader, incubator



Aflatoxin M1(AFM1) Elisa kit

Detection of Toxid chemical in food

Aflatoxins are very toxic chemical which always contaminate cereal, corn and peanut, etc., while aflatoxin M1 is the metabolite of Aflatoxins after being consumed by animals. Strict residue limit has been established for aflatoxin M1 in dairy milk and baby food.

KIT SPECIFICATIONS:

- Detection limit:
Milk Powder: 0.08 ng/g or ppb,
Yogurt: 0.02 ng/g or ppb
Sample type: Milk Powder, Yogurt
Shelf life: 24 months

ADVANTAGES OF THE KIT:

- Fast detection – Less than 90 minutes to results
- No sample preparation needed



● Specificity: 100%

● Sensitivity: 97%



Aflatoxin B1 Elisa kit

Detection of Toxid chemical in food

Aflatoxin B1 is the most common substance in food and one of the most genotoxic and carcinogenic aflatoxin. Generally speaking, aflatoxin b1 exists in many natural foods, such as corn, peanuts, edible oil, beans, grains, etc.

KIT SPECIFICATIONS:

- Detection limit:
Detection limit: 0.03 ppb - 0.48 ppb
Sample type: Cereal
Shelf life: 6 months

ADVANTAGES OF THE KIT:

- A quick ELISA assay
- Easy, high recovery sample preparation
- Cost effective - No expensive instrumentation required



● Specificity: 100%

● Sensitivity: 98%

FOOD PATHOGENS



Food Security Kits

Total Aflatoxin Elisa test

The kit is a competitive enzyme immunoassay for the quantitative analysis of total aflatoxin in livestock and Poultry Feed.

Product name	Package	Detection limit	Specimen	Shelf life
Total Aflatoxin Elisa test	96 assays	0.1ppb- 0.2ppb	cereals, formula feed, edible oil, peanut, biscuit, beer, wine, soy sauce, vinegar	24 months

Aflatoxin B1 Elisa test

Aflatoxin B1 is the most common substance in food and one of the most genotoxic and carcinogenic aflatoxin.

Product name	Package	Detection limit	Specimen	Shelf life
Aflatoxin B1 Elisa test	96 assays	0.1ppb	cereals	24 months

Malachite Green Elisa test

Malachite green (MG) is a triphenyl methane dye used extensively in the aquaculture industry for the treatment of fungal and protozoal infections.

Product name	Package	Detection limit	Specimen	Shelf life
Malachite Green Elisa test	96 assays	0.1ppb	cereals	24 months

Detection of Toxid chemical in food

PRP kit (to treat and beautify)

Platelet Rich Plasma (PRP) is concentrated from blood which contains healing factors, such as white blood cells and bioactive proteins, called growth factors and stem cell markers. These cells are vital for tissue regeneration and repair. Platelets, once thought of being responsible for only clotting, have been scientifically proven to be a reservoir of these vital healing components.

KIT SPECIFICATIONS:

- Sterilized and safe to use
- Closed structure of one tubing system
- One step Process
- Easy Extraction of the therapeutic PRP

ADVANTAGES OF THE KIT:

- High Concentration
- High Platelet Recovery
- Easy To Use
- Sterile Device
- Fits Standard Centrifuge
- Clear Separation of RBC and PPP



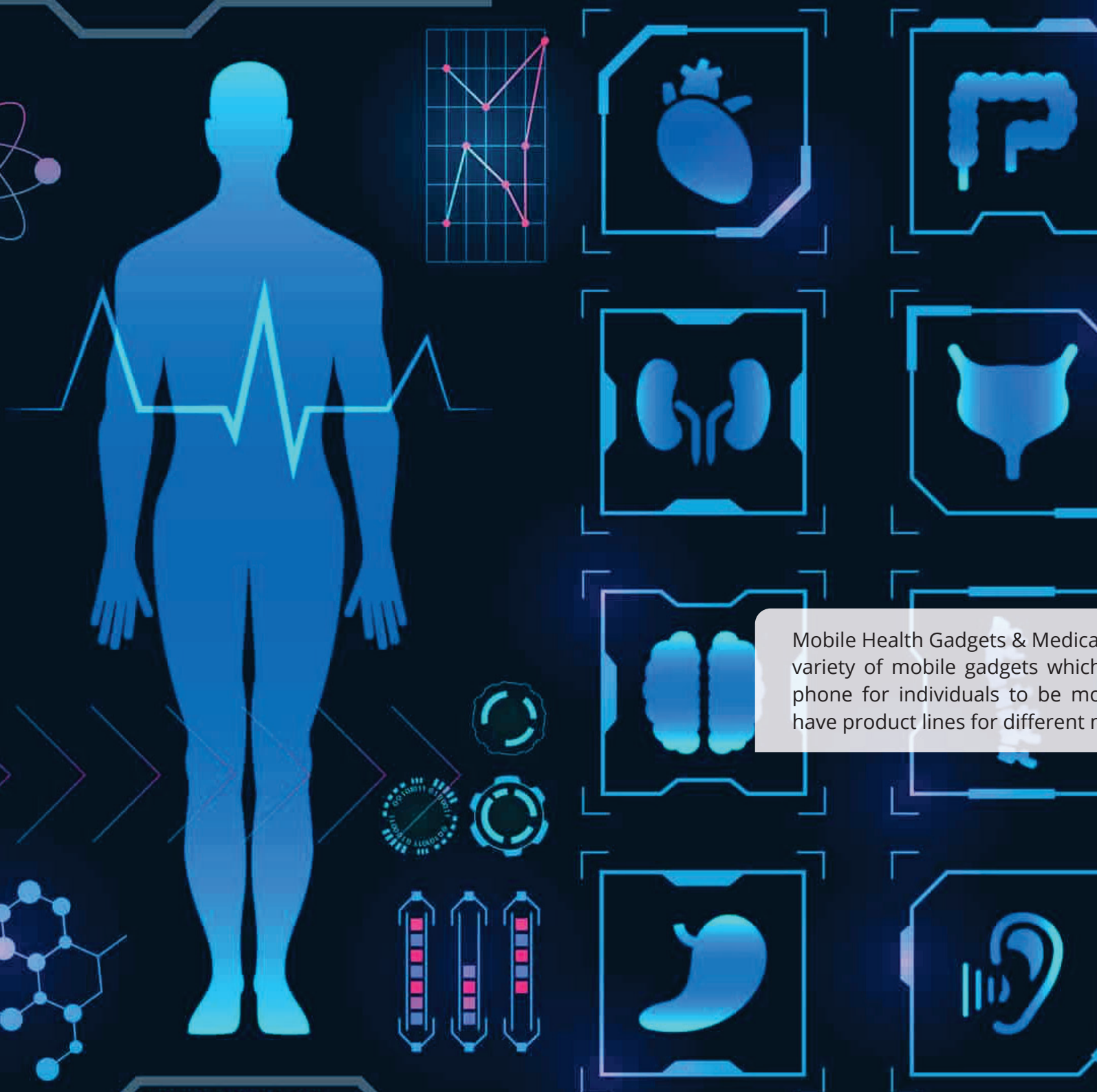


Medical Equipments & Mobile Health Gadget

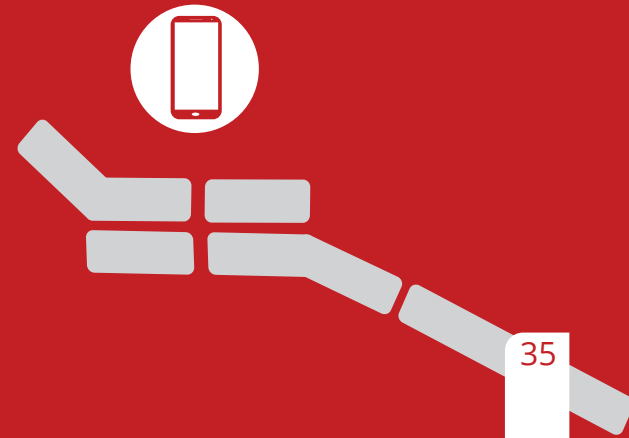
Medical Research



DNA



Mobile Health Gadgets & Medical Equipments We have produced variety of mobile gadgets which can be connected to a mobile phone for individuals to be monitored and screened. We also have product lines for different medical equipment.





Smart pulse oximeter



- An easy and safe way to detect heart rate and blood oxygen
- High speed (in about 4 to 5 seconds)
- Ability to share results with your doctor
- Connect to mobile phone via Bluetooth

Smart scales and analyzers



- Ability to monitor 9 parameters such as body fat, muscle mass, bone mass and so on.
- Display parameter changes in the chart
- Ability to measure weight and BMI
- Ability to share results with friends, family and doctors
- Connect to mobile phone via Bluetooth

Smart blood pressure monitor



- Ability to measure heart rate, systolic blood pressure and Diastolic and heart rate on a daily basis
- Ability to share results with your doctors
- Ability to record in memory for monthly checks
- Connect to mobile phone via Bluetooth

Smart blood glucose monitor



- Ability to view blood glucose levels in real time and record the results
- Test-reminder alert and track changes in glucose and insulin
- Ability to share results with friends, family and doctor
- Connect to mobile phone via Bluetooth



Smart sleep and fitness tracker



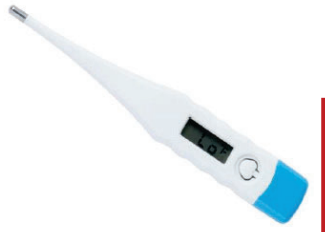
- Waterproof and antiperspirant
- Ability to monitor the duration and quality of sleep
- Ability to measure steps and distance traveled
- Ability to share results with friends, family and doctor
- Connect to mobile phone via Bluetooth

Smart device for monitoring children and Elderly



- A two-way voice communication
- Ability to record an image
- Ability to record video
- Ability to control the camera via mobile or computerscreen

Smart thermometer and body thermometer



- Ability to measure temperature in less than second
- Track colds, flu and illness via cell phone
- Ability to share results with friends, family and doctors
- Connect to mobile phone via Bluetooth



Eye vision testing machine



- Ocular refractometer
- Connect to a smartphone
- Announce the exact eye number after three tests
- Connect to mobile phone via Bluetooth by placing two red and green lines in a row and thereby evaluating the visibility of their eyes.
- Ability to diagnose eye defects such as astigmatism or myopia
- Designated numbers are stored online in an application then same program.
- In addition, people can view the progress of their vision over time by loading the version of the previous glasses in this program.
- With this device you can get eye score at home without visiting The ophthalmologist's office specified.

Spirometry



- People can use this product to assess their respiratory condition
- Easy to use, Breathe naturally in this light product and then the person's inhale and exhale will be measured and evaluated.
- Breathing analysis product based on collected data, seems to send users exercises and workouts is sent to improve the person's lung capacity and health by doing them.
- This gadget is not only designed for smokers and people with respiratory problems, but also for athletes, singers and people living in polluted environments. In addition, this product helps anxious people to improve their breathing.

Hand sanitizer wristband



- Hand sanitizer wristband is a very useful product during the COVID-19 outbreak, by which people always carry a small amount of hand sanitizer with them.
- When you are going to disinfect your hands, press the bracelet to pour some disinfectant liquid on your hands



Smart ring



- This smart ring that tracks people's health is one of the other health gadget introduced in 2020.
- Since this gadget only needs to be charged once a week, you do not need to take it off every night.
- The smart ring is equipped with infrared LEDs, sensors, NTC and accelerometer and is able to track changes in heart rate, body temperature, steps taken and so on.

Smart watch



- The smartwatch is the latest health tracker to be released in 2020. This gadget is able to measure the user's stress level, body temperature and heart rate.
- The user will be notified when these criteria are not within their normal range. This product monitors your

Smart scales and analyzers



- Ability to monitor 9 parameters such as body fat, muscle mass, bone mass and so on.
- Display parameter changes in the chart
- Ability to measure weight and BMI
- Ability to share results with friends, family and doctors
- Connect to mobile phone via Bluetooth

Smart blood glucose monitor



- Ability to view blood glucose levels in real time and record the results
- Test-reminder alert and track changes in glucose and insulin
- Ability to share results with friends, family and doctor
- Connect to mobile phone via Bluetooth health status in everywhere. In addition, this smartwatch can be used to reply calls and text messages.
- The manufacturer claims that the battery of the smartwatch can keep working for up to 6 days without using GPS with just 12 minutes of charging and can be used for a full day.

E-Health Platform & Tele-Health Services

HEALTH INSURANCE
MEDICAL TREATMENT
FINANCIAL BENEFITS
DISEASE COVERAGE
ACCIDENT
PROTECTION

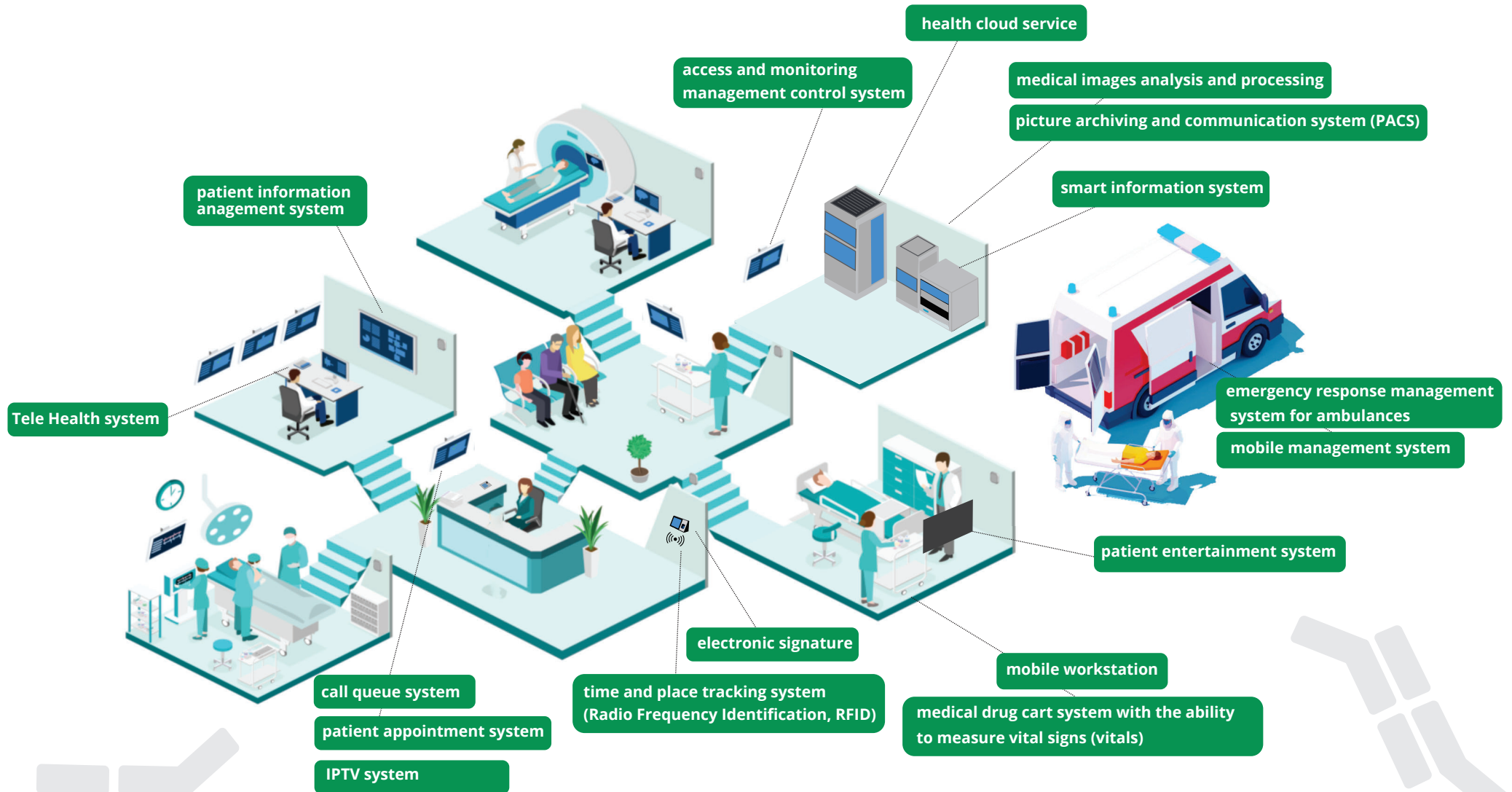
MEDICAL



+ Smart Hospital

access and monitoring management control system





Services provided in Smart Hospital

- 24-hour monitoring of vital signs, access to care details and course of the disease and patient clinical information with the help of new telemedicine and mobile health technologies
- Forming electronic patient medical records, personalizing treatment and clinical services with the patient's biological characteristics along with keeping the record of medical information
- Ability to use advanced equipment in the diagnosis of treatment and clinical services
- Interaction between physicians and specialists using electronic counseling, electronic referral and telemedicine systems
- Ability to observe and control environmental conditions by the patient (temperature, lighting, opening the curtains, music, entertainment, etc.).
- Intelligent control of environmental conditions (temperature, pressure, humidity, the amount of gases and rays, etc.) in the operating room
- Patient tracking system and positioning the time and place of objects and people using sensors and labels.
- Establishment of intelligent call queue system, evaluation, acceptance and services support for foreign tourists in Dora-Salamat stations
- Hospital equipment, items, personnel and patient's management system by RFID technology.
- Establish and connect a communication network between health information system, electronic medical records system, laboratory information system, radiology information system, pharmacy information system and emergency system
- Create a management dashboard system and provide management reports and personnel management system and the possibility of performance-based payment
- Establish an intelligent business system for the use of clinical and managerial information in other hospitals
- Establish an intelligent ERP business management system to automate the hospital's internal offices related to services, human resources, consumables management, financial management and resource management
- Establish E-Prescription and E-MAR systems for electronic prescription exchange between the doctor, the pharmacy and the patient
- Chronic Care Management System (CCM)
- Possibility of securing different parts of the hospital (CCTV cameras, access control system to special rooms, RFID system, etc.)
- Provide support systems including protection and security system, equipment tracking system, energy management system, maintenance system and intelligent building control system

Comprehensive system of occupational medicine management and health monitoring

Occupational medicine is a branch of clinical medicine that prevents occupational diseases by examining the health status of personnel and considering the conditions of the work environment.

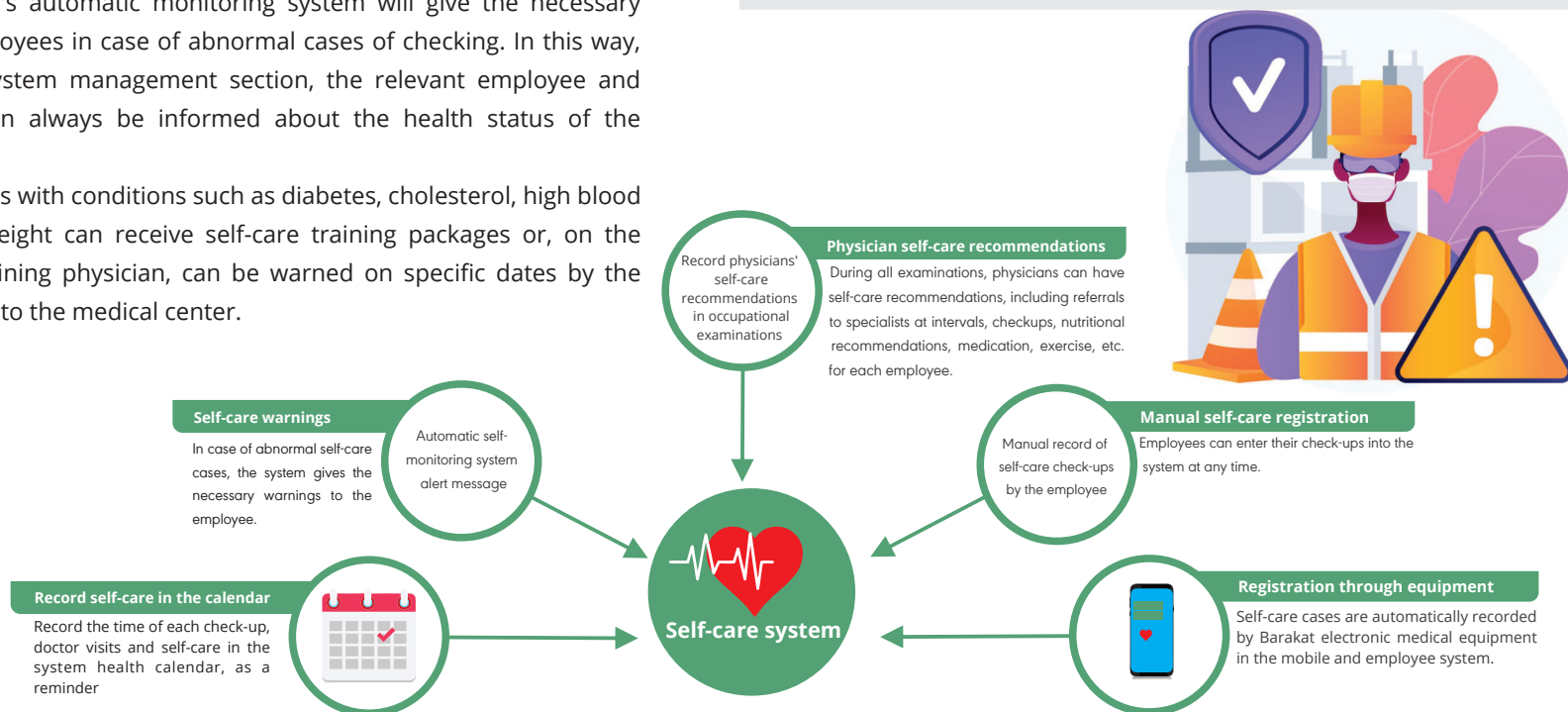
Due to the variety of job titles and harmful factors in the workplace, a comprehensive software is needed to record and follow up on tangible examinations. The occupational medicine system of Barakat E-Health Company performs the job examination process for organizations with unique efficiency along with high accuracy and speed. Moreover, the latest health status of the occupational medicine system is connected with the health information of other systems of Barakat E-Health Company and the any change in one of these areas affects the other areas.

In the occupational medicine software of Barakat Electronic Health Company, in addition to the process of periodic examinations, the system provides the possibility for all employees to be able to measure their self-care items every day with the help of medical equipment provided by Barakat E-Health Company and register automatically on your mobile phone and view demo charts of changes. The system's automatic monitoring system will give the necessary warnings to the employees in case of abnormal cases of checking. In this way, in addition to the system management section, the relevant employee and system managers can always be informed about the health status of the personnel.

In addition, employees with conditions such as diabetes, cholesterol, high blood pressure, and overweight can receive self-care training packages or, on the advice of their examining physician, can be warned on specific dates by the health calendar to go to the medical center.

Unique features of occupational medicine software:

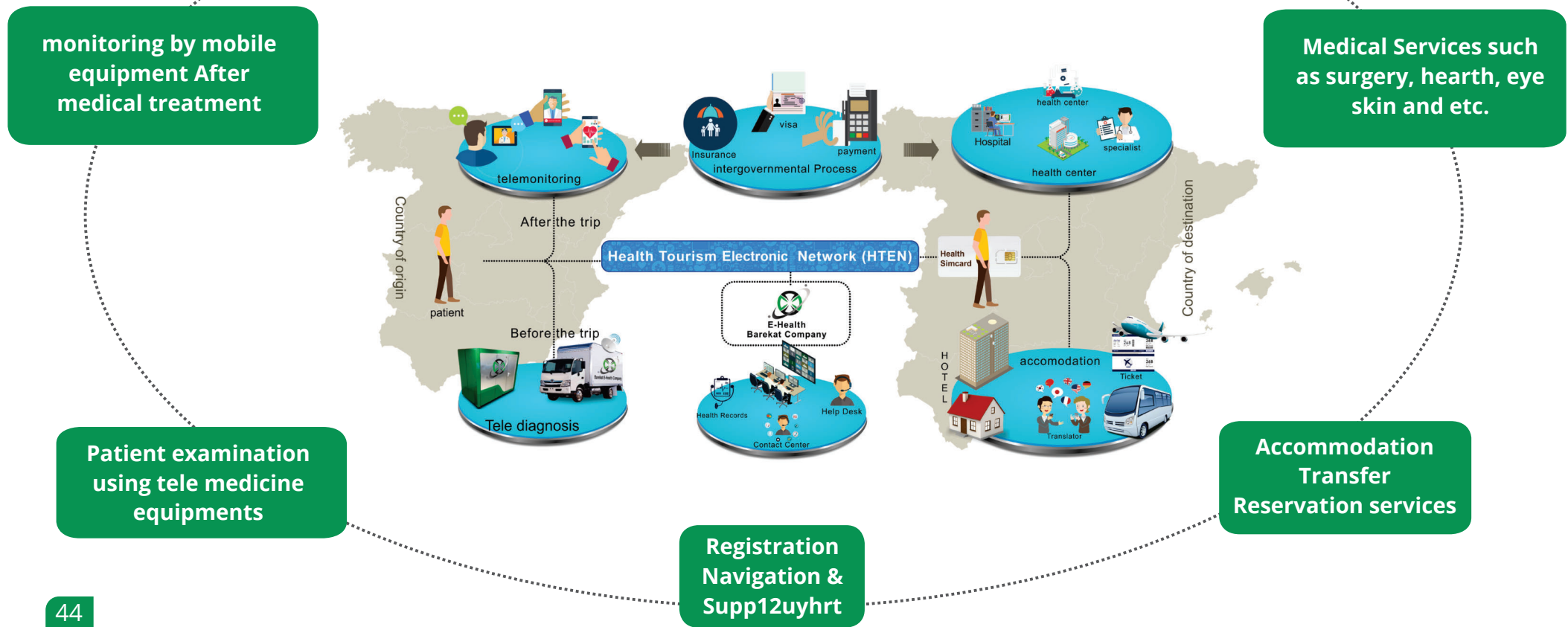
1. Mobile app for staff: For employees' mobile with the ability to record self-care check-ups at any time, view the latest status of health records, receive messages, view charts
2. Advanced self-care: recording check-up values and receiving training packages for diabetes, cholesterol, blood pressure, high weight, viewing comparative charts of check-ups
3. Simultaneous connection to all systems of Barakat E-Health Company: Without the need to re-enter the system and receive the latest recorded values from examinations and check-ups
4. Define psychological tests with interpretation
5. Personalizing and self-care alert services for each of the personnel along with the advanced health calendar: medicine reminders, visits, self-care, occupational examinations, etc.
6. Dashboard for employees
7. Possibility of connecting electronic self-care equipment of Barakat E-Health Company to the self-care system in the app
8. Exclusive dashboard with different access levels such as medical centers, laboratories and examiners
9. Employee management system
10. Possibility of health monitoring and occupational examinations by health kiosks of Barakat E-Health Company



+ Health Tourism Electronic Network

Electronic health tourism is an integrated health network that connects patients living in their countries with specialized medical centers. This network provides diagnostic telemedicine services for patient prior to his travel to destination country. This network also provides patient with Tele-health care services after he returns to his country of origin. In this network, Accreditation Center provides required infrastructure in order to present high quality services in health and medical centers, hotels and tours. Facilities such as patient insurance, visa and payment process are the other benefits of Accreditation Center.

Throughout Health Tourism Exchange Network patient is examined remotely in the place he is living and disease is recognized by Tele- health equipment. Once diagnosis is established, if patient is required to go under surgery or receive physical therapy then Health Tourism Electronic Network arrange all the issues related to patient transit including visa, hotel reservation and transfer and etc., and then transfer patient to the hospital of destination country. In addition, after surgery when patient returns to his country, there is possibility for the patient to be under care throughout mobile health equipment and receive Tele-monitoring care until achieving full recovery.



+ TeleHealth Services

Barakat TeleHealth “is a “tele Health system” to share medical visual data with medical centers and to treat patients from remote area with medical devices such as electronic stethoscope medical magnifying glass and electrocardiograph which installed into Health Stations.

This system helps doctors to diagnose, treat, write prescriptions and receive data such as blood pressures, blood sugar levels, pulses, body fat percentage, ECG levels, temperatures, auscultation data (cardiac sound/ pulmonary sound) and visual data of endoscope CR, CT and MRI for patients from hard to approach areas such as mountains and islands.

Live video streaming system provides a face-to-face telemedicine consultancy between doctor and patient and also paves the way of connected medical instruments to be seen by specialist.

Specialized medical instrument modules installed in health stations provides Tele Dermatology, Tele Psychology, Tele Pathology, Tele Ophthalmology, Tele Cardiology and Tele colposcopy.

Features of TeleHealth Services

Real-time Video Streaming

Unparalleled video performance and extreme bandwidth efficiency with superior video quality

Remote Prescription and Specific Contents Service

Electronic prescription (with electronic signature) can be drafted and sent. Internalized contents and service engine enables patient-specific ill care directions, dietary guidelines, and exercise contents to be distributed.

Various Medical Instrument Interface Module

A convenient module with medical instrument interface which can automatically send data on blood pressure/blood sugar, lung capacity, stethoscope, EKG, blood analysis, body index, urine analysis, film scanner.

Hardware Composition Suited for Customer's Environment

Instead of a stationary system composition, maximizes hardware's dynamic flexibility and linkage with operating software through fixed/mobile system and Rack Type/Desk Type hardware.



Tele Dermatology



Tele Psychology



Tele Pathology



Tele Ophthalmology



Tele Cardiology



Tele Colposcopy

E-Health Station & Tele Health vehicle

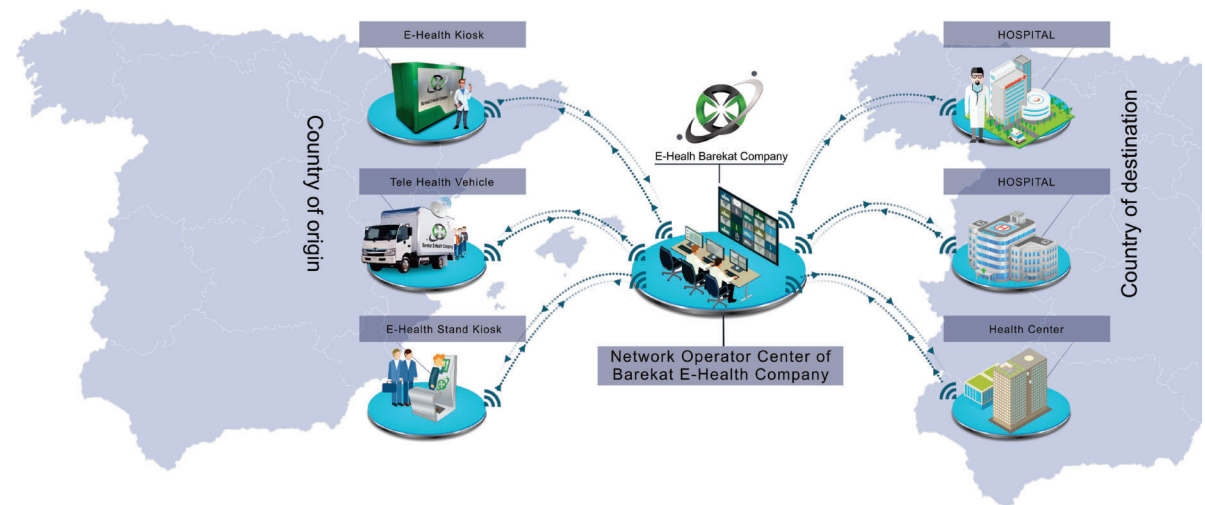
E-Health Stations are designed to be deployed by a user. Services in such stations are of Self Service kind. Upon entering your username and password, the services will start immediately through video calls, voice and interactive commands. During the service, the user will be asked to insert his/her details and carry different steps to obtain services carried correctly.

In this method, used as a new standard method in the field of electronic health in the leading countries, a doctor can visit the patient face to face through video conferencing and refer him/her to the relevant specialist, if necessary. Video Conferencing Service is designed on the national intranet platform and enjoys a good level of speed, quality and security.

Tele-Health vehicle offers specialized remote services, providing of which requires the help of a medical staff person. In other words, in this type of service, a doctor and a technician help to improve the process of Tele. In this case, a vehicle is equipped with VSAT technology in order to establish a point to point connection between a patient in the vehicle and a physician in other area through satellite communications. The point of such mobile stations is to cover a vast area by taking advantage of the station's mobility. This station covers a variety of services such as periodic check-ups, initial medical health records, common and professional consultation, tests interpreting and medical images. All of these services are offered by a trained Tele physician, and a technician-driver.

The services that can be provided in the health stations and health vehicle are listed as follows:

- Electronic health record for monitoring patient / user, using health information management software
- Remote expert / above specialized consulting services to the doctors at the Central clinic
- Cardiovascular examination (with digital stethoscope, blood pressure, and electrocardiogram (ECG))
- Ear, nose and throat examination (using Tele otoscope, rhinos cope and Laryngoscope)
- Specialized examination of the eye and retina
- Examination of the skin (with the Tele-Dermatology equipment)
- Tele-dentistry
- Initial blood tests with digital Laboratory devices
- Tele-radiology services through sending images or interpretations to get expert advice
- Tele sonography Services



INTERNATIONAL

Collabrations & Activities



Contact us:



No.6, 32nd St., Valiasr St.(South of Vanak sq.),
Tehran, Iran.



info@ehealthoperator.com



Electronic Health: www.ehealthoperator.com
Kit products: www.kitproduct.com



+98 (21) 860 80 589
+98 (21) 866 74 456

